

# ARE YOU MAKING THESE 3 SUPPLY CHAIN-RELATED MISTAKES?

By: Sitav Elturan  
Singota Solutions

*Singota® Solutions is a CDMO located in Bloomington, Indiana, USA that specializes in Parenteral, Early Phase Drug Development and Aseptic Filling projects.*

Managing a supply chain for small-batch and early-phase drug development might seem like a high-stakes puzzle—except the pieces keep moving, some are upside down, and others seem to belong to an entirely different box. Sound familiar? The good news is that with the right strategy, you can put all the pieces together seamlessly. The bad news? Just one or two missteps can turn that picture-perfect puzzle into a logistical nightmare, risking timelines, budgets, and, most importantly, the integrity of your product.

Let's unravel the top three supply chain-related mistakes and how to avoid them, ensuring your drug development journey is as smooth as it is successful.

## 1. Overlooking the Importance of Effective Thermal Shippers

Cold-chain shipping is far more than just a box and some ice packs. Shippers are the unsung heroes of supply chain management, ensuring temperature-sensitive products remain stable and safe from production to delivery. But not all shippers are created equal. Choosing the wrong one can result in temperature excursions that compromise product efficacy, regulatory compliance, and jeopardize patient safety.

Effective shippers must maintain precise temperature ranges tailored to your product's needs, resist damage during transit, and provide insulation against external environmental factors like shock. Advancements in materials science and sustainable technology have delivered reusable shippers with enhanced insulation to our industry. Modern tracking technologies offer incredibly precise data tracking temperatures and locations during transit. Staying on top of these trends isn't just beneficial — it's essential. For instance, using shippers optimized for dry ice or phase-change materials can significantly reduce risks for ultra-cold products.

Small-batch and early-phase drug developers, in particular, face unique challenges. Their smaller scale often requires more cost-efficient solutions without sacrificing reliability. Collaborating with an expert supply chain partner who understands these needs ensures you're not just choosing the latest shipper on the market but the one that fits your specific project requirements.

## 2. Neglecting Temperature Monitoring and Data Tracking

Imagine flying a plane without an instrument panel—no temperature gauges, no navigation tools, just pure guesswork. That's what it's like managing a cold-chain shipment without temperature monitoring. While shippers are designed to maintain stability, they're only part of the equation. Without robust temperature monitors, there's no way to verify that conditions were maintained throughout transit.

Temperature monitoring is about more than regulatory compliance; it's about ensuring the product reaches its destination with the same integrity it had when it left the facility. Modern temperature monitors can track not only temperature but also other variables like shock, providing a complete picture of the shipment's journey. This data trail is crucial for identifying vulnerabilities, improving processes, and demonstrating compliance to regulatory authorities.

Post-shipment data analysis is equally important. A robust data trail provides actionable insights for refining routes, selecting better carriers, or even adjusting packaging strategies. Software platforms now offer real-time alerts for deviations, ensuring immediate action can be taken if something goes wrong. Without this system in place, any issues discovered post-delivery could result in product loss or delayed timelines—two things no drug developer wants to encounter.



### 3. Choosing the Wrong CDMO

Your choice of CDMO (Contract Development and Manufacturing Organization) is arguably the most impactful decision in your supply chain strategy. The right partner acts as an extension of your team, bringing expertise, infrastructure, and proactive problem-solving to the table. The wrong partner? They bring delays, inefficiencies, and compliance headaches.

When evaluating CDMOs, focus on their experience with small-batch and early-phase projects. These require a nuanced approach that balances flexibility with precision. Does the CDMO have a track record of meeting deadlines and navigating regulatory challenges? Do they offer scalable solutions that can grow with your pipeline? What are their capabilities for cold-chain storage, aseptic filling, and supply chain management?

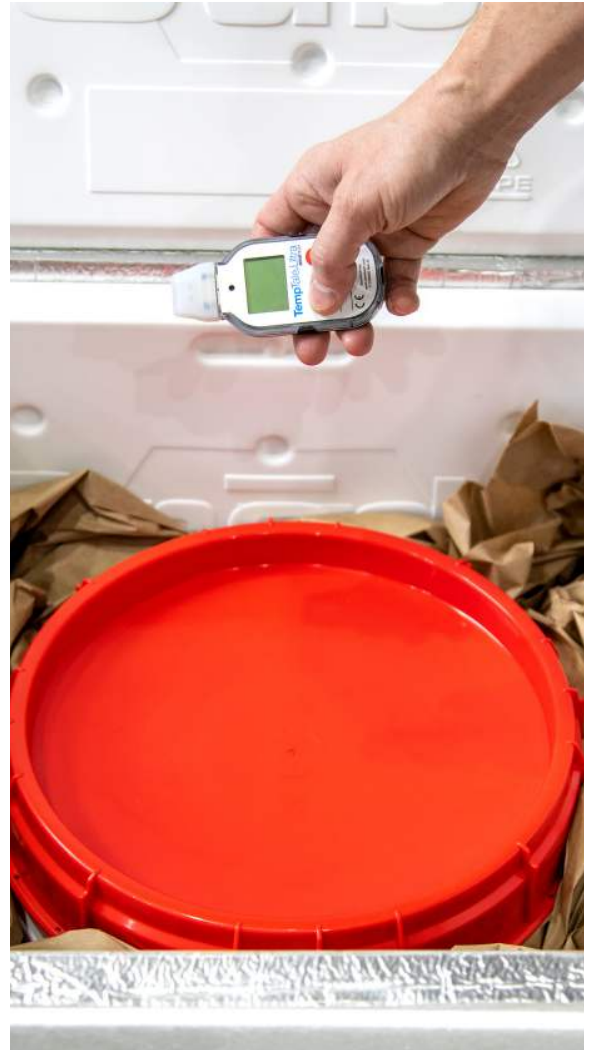
Equally important is transparency. The best CDMOs provide clear communication and regular updates, keeping you informed every step of the way. This collaborative approach ensures potential issues are identified early and addressed effectively. For example, a CDMO with integrated logistics and manufacturing capabilities can reduce the risks associated with coordinating multiple vendors, saving time and resources.

#### Conclusion

Supply chain management for small-batch and early-phase drug development isn't just about logistics—it's about safeguarding innovation and ensuring patient safety. By choosing effective thermal solutions implementing robust temperature monitoring, and partnering with the right CDMO, you can transform your supply chain from a potential bottleneck into a streamlined advantage.

So, what's next? Avoiding these three mistakes is just the beginning. Stay tuned for more insights into mastering your supply chain strategy, or better yet, let's start a conversation. Because in the world of drug development, success is a team sport, and having the right players makes all the difference.

Ready to turn your supply chain into a competitive advantage? Reach out, and let's make it happen—one perfectly executed shipment at a time.



**Singota Solutions** is a US based CDMO in Bloomington, Indiana. Singota specializes in formulation development and aseptic fill finish for injectable projects. Once a formulation is established, Singota utilizes state of the art robotic filling technology and focuses on smaller batch size requirements. For more information, visit [Singota.com](http://Singota.com) to explore how Singota has established itself as a one-stop solution for all your developmental needs.

Contact [solutions@singota.com](mailto:solutions@singota.com) to schedule a meeting with our business development team to further discuss your current or future projects.